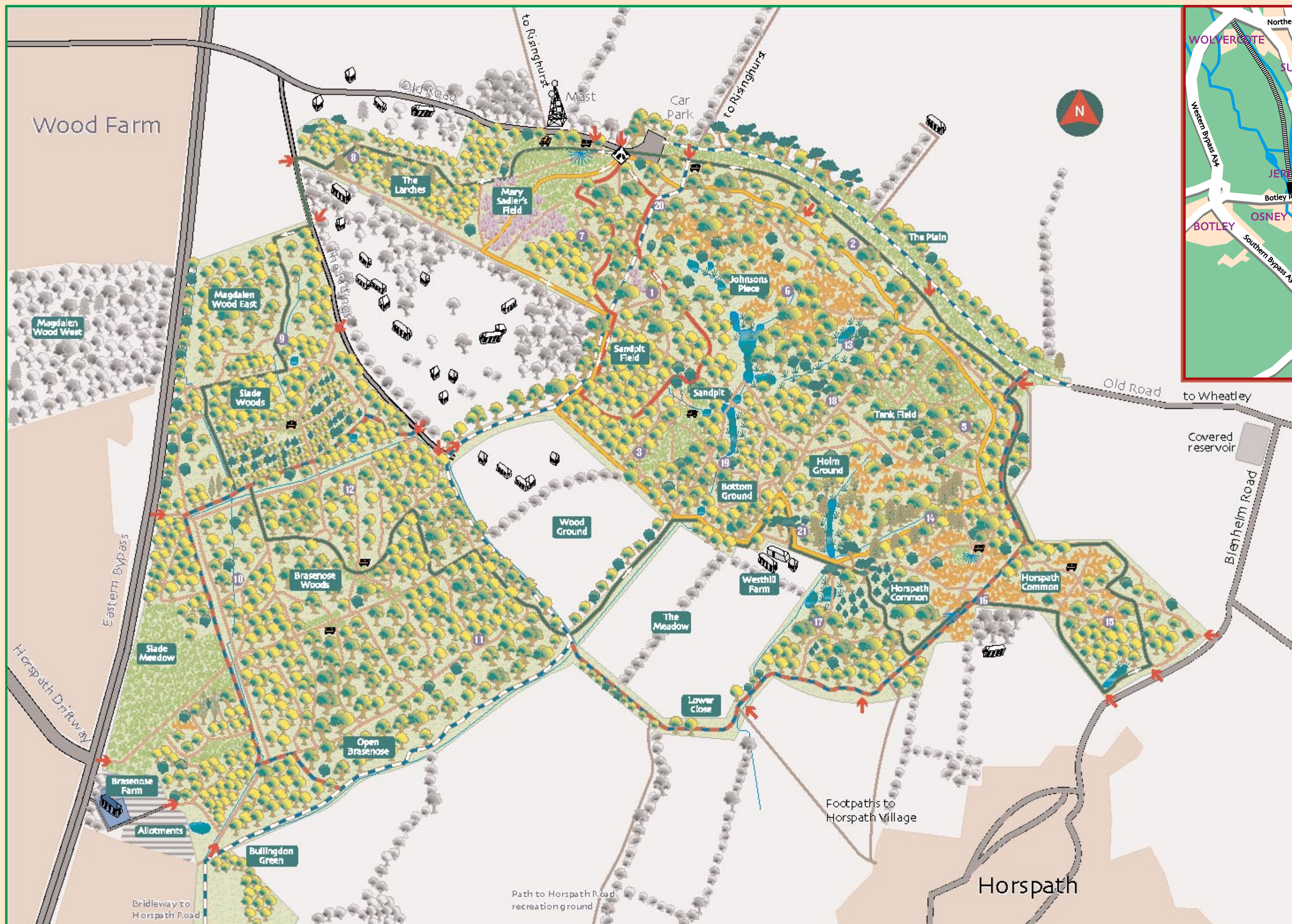


Exploring Shotover Country Park



www.oxford.gov.uk



How to get to Shotover

It is easy to get to Shotover, which is located just to the east of Oxford.

By car, follow the Old Road east from Headington over the bypass and up a steep hill to the top where the road ends in the main car park.

By bus, the No.10 Stagecoach service runs nearest to Shotover. Get off at the Corner House pub at the end of Slade Road. Walk down Horspath Driftway and cross the Eastern Bypass at the pelican crossing to enter the Country Park on the other side. For timetable and route information contact Stagecoach Oxford, T: 01865 772250 www.stagecoachbus.com/oxfordshire

Key to Main Map

- Starting point for Nature trails and Orienteering Course
- Sandpit Walk 30 mins
- Northwood Trail 45 mins
- Boundary Patrol 90 mins
- Bridleway and Cycle track
- Permitted bridleway and Cycle track
- Maintained paths not all paths are marked
- Ancient Woodland Oaks
- Deciduous Woods
- Evergreen Trees Spruce, Pine
- Poplar
- Larch
- Bushes
- Heather
- Grass
- Bracken
- Wetland
- Ponds
- Streams and Ditches
- Seats
- Picnic Bench
- View Point
- Entry Points to Shotover
- Orienteering Stations
- Metalled Roads
- Built-up Areas
- Buildings



COUNTRYSIDE



